

AQUASPEC[®] FAUCETS

MODEL - Z85500-XL SERIES
DOUBLE FOOT PEDAL VALVE



TECHNICAL INFORMATION

MAXIMUM PRESSURE: 125 PSI

MAXIMUM TEMPERATURE: 180° F

CARTRIDGE STYLE: ZURN SELF CLOSING FOOT PEDAL CARTRIDGE

INSTALLATION INSTRUCTIONS

1. BE SURE SUPPLY LINES ARE THOROUGHLY FLUSHED BEFORE INSTALLATION.
2. REMOVE FOOT PEDAL VALVE FROM CARTON AND MOUNT TO WALL USING WOOD MOUNTING SCREWS.
3. CONNECT OUTLET PIPING TO 3/8" NPT PORT ON OF VALVE.
4. CONNECT SUPPLY PIPING TO 1/2" NPT STOPS. (ONLY WALL MOUNT UNIT PROVIDED WITH STOPS)
5. TURN SUPPLY WATER ON AND OPERATE FOOT PEDAL CHECKING FOR LEAKS.

MAINTENANCE

1. YOUR ZURNAQUASPEC FOOT PEDAL VALVE HAS A HIGHLY POLISHED NICKEL CHROME PLATED FINISH. CLEAN WITH SOAP AND WATER OR A MILD CLEANER WHICH IS SAFE FOR CHROME PLATING. DO NOT USE ACIDS OR TOILET BOWL CLEANER AS THEY WILL DAMAGE THE FINISH.
2. G67948 SELF-CLOSING VALVE ASSEMBLY (ITEM #1A OR #6A) MAINTENANCE
 - 2.1. REMOVE SELF-CLOSING VALVE ASSEMBLY (ITEM #1A OR #6A) USING ADJUSTABLE WRENCH. USE CARE TO AVOID DAMAGING THE POLISHED CHROME FINISH.
 - 2.2. RE-ASSEMBLE SELF-CLOSING VALVE TO FOOT PEDAL VALVE BODY ASSEMBLY
 - 2.3. TURN ON WATER SUPPLY AND TEST FOR FUNCTION AND LEAKS AROUND SELF-CLOSING VALVE ASSEMBLY.

REPLACEMENT PARTS

G67948 SELF CLOSING VALVE ASSEMBLY

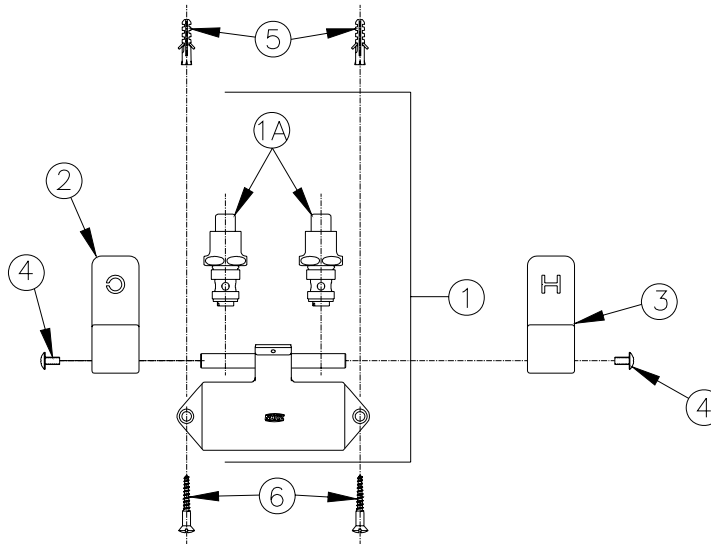
ZURN INDUSTRIES, LLC ♦ COMMERCIAL BRASS OPERATION ♦ 2640 SOUTH WORK STREET ♦ FALCONER NY 14733

Phone: 1-800-997-3876 ♦ Fax: 1-919-775-3541 ♦ www.zurn.com

In Canada: ZURN INDUSTRIES LIMITED ♦ 3544 Nashua Drive ♦ Mississauga, Ontario L4V1L2 ♦ Phone: 905/405-8272 Fax: 905/405-1292

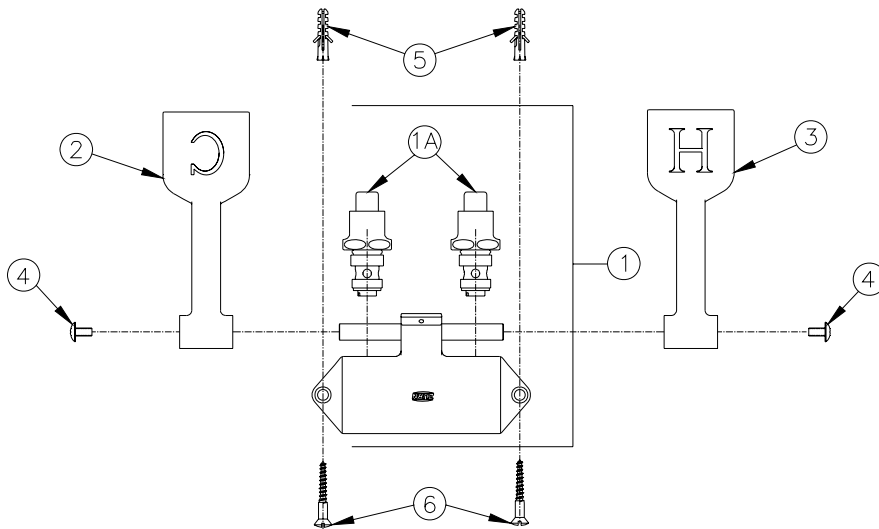
SHEET 1 OF 3

Form # CF1499	Date: 10/20/10
C.N. No. 127020	Rev.



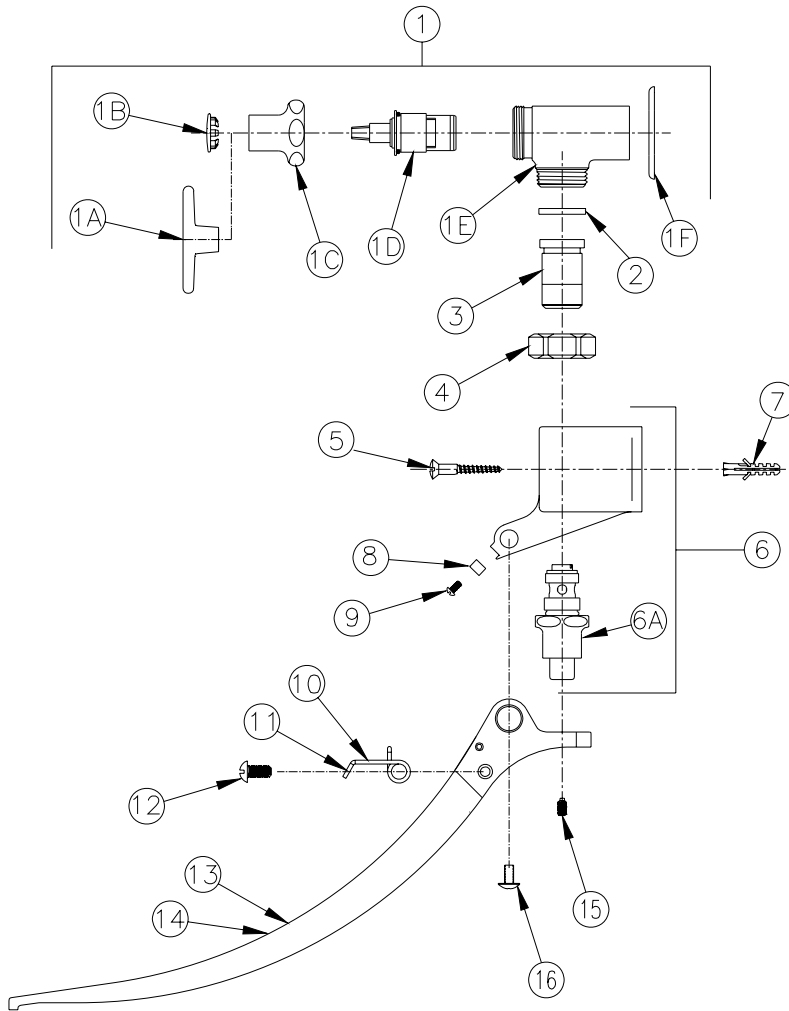
Z85500-XL PICTURED

Item	Part Number	Description	Qty.
1	G67961	Body Assembly	1
1A	G67948	Self-Closing Valve Assembly	2
2	80348003	Short Cold Foot Pedal	1
3	80348002	Short Hot Pedal	1
4	92345001	10-32 Screw	2
5	62359001	Wall Anchor	2
6	61817001	#12 1-1/2" Wood Screw	2



Z85500-XL-LM PICTURED

Item	Part Number	Description	Qty.
1	G67961	Body Assembly	1
1A	G67948	Self-Closing Valve Assembly	2
2	80499003	Medium Cold Pedal	1
3	80499002	Medium Hot Pedal	1
4	92345001	10-32 Screw	2
5	62359001	Wall Anchor	2
6	61817001	#12 1-1/2" Wood Screw	2



Z85500-XL-WM PICTURED

Item	Part Number	Description	Qty.
1	G67988	Foot Pedal Stop Assembly	2
1A	61551001	Tee Handle	1
1B	59667001	Plug	1
1C	60807001	Nut	1
1D	59517006	Hot Cartridge	1
1E	300597001	Stop Body	1
1F	62334001	Escutcheon	1
2	59748001	Gasket	1
3	60751003	Adaptor	2
4	60752001	Nut	2
5	61817001	1-1/2" Flat Head Wood Screw	2
6	G67961	Body Assembly	1
6A	G67948	Self-Closing Valve Assembly	2
7	62359001	Wall Anchor	2
8	59744002	Plate	1
9	59742002	Screw	1
10	59738002	Spring (Right)	1
11	59738001	Spring (Left)	1
12	59742001	Screw	2
13	80428002	Pedal (Hot)	1
14	80428003	Pedal (Cold)	1
15	60749001	Set Screw	2
16	92345001	10-32 Screw	2