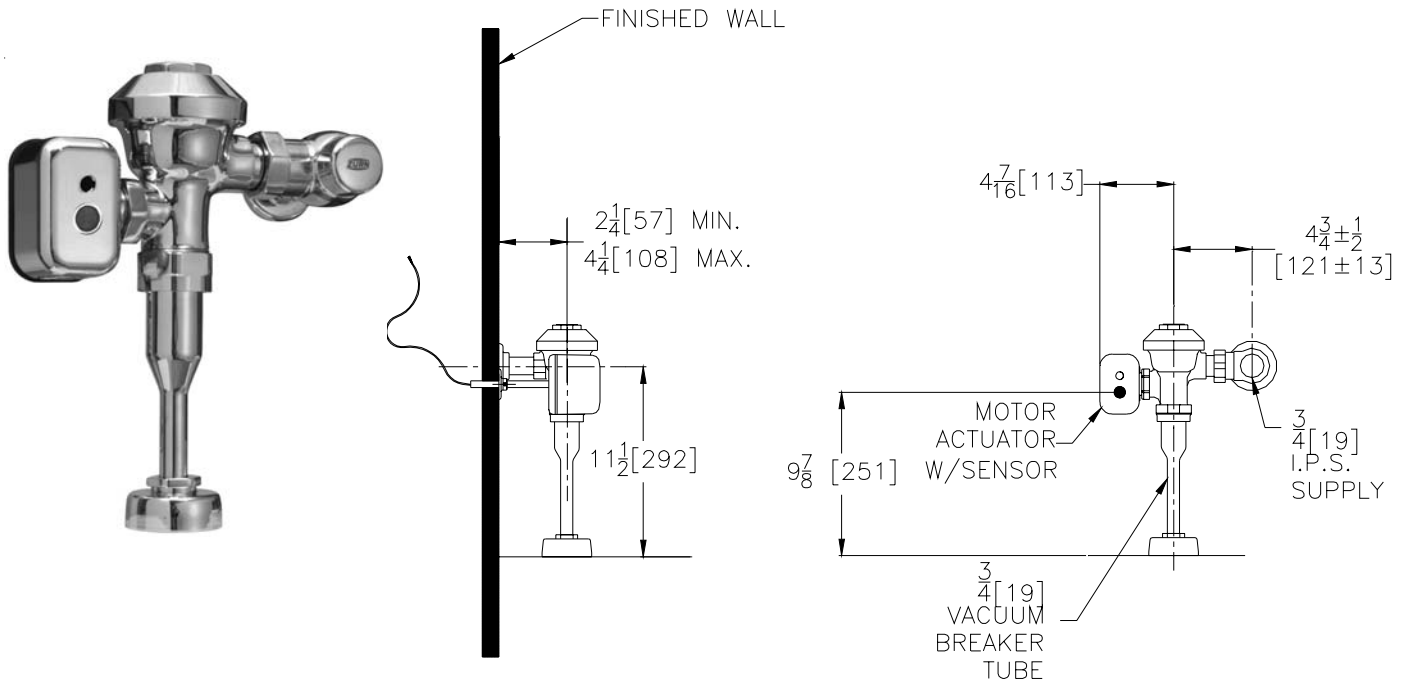




## Exposed ZEMS6003AV-IS Model For 3/4" Urinals



### Flow Options

- |   |                          |
|---|--------------------------|
| <input type="checkbox"/> -EWS           | 0.5 Gallons per flush    |
| <input type="checkbox"/> -WS1           | 1.0 Gal. Low Consumption |
| <input type="checkbox"/> Standard Flush | 1.5 Gallons Per Flush    |

### Suffix Options (Check/Specify Appropriate Options)

- |           |                             |
|-----------|-----------------------------|
| _____ -VP | Vandal Resistant Stop Screw |
| _____ -YJ | Split Ring Pipe Support     |
| _____ -YK | Solid Ring Pipe Support     |
| _____     | Other                       |

### Accessories (Order separate as specified)

- |                  |   |
|------------------|---|
| <b>P6000-BB</b>  | Battery Back-up (Up to 8 valves)              |
| <b>P6000-PC6</b> | 6VDC Plug-in Power Converter (Up to 8 valves) |
| <b>P6000-MJ</b>  | Mini Junction Box                             |
| <b>P6000-HW6</b> | Hardwire Power Converter (Up to 8 valves)     |

This space is for Architectural/engineering Approval

### ENGINEERING SPECIFICATION: ZURN ZEMS6003AV-IS AquaSense® AV' Exposed Hardwired Automatic Sensor Flush Valve For 3/4" Urinals-

Exposed, quiet diaphragm-type, chrome plated, flushometer valve with a polished exterior. Complete with Zurn's AquaVantage TPE, chloramine resistant, dual seal diaphragm with a clog resistant, triple filtered by-pass. The valve incorporates a 6 VDC motorized actuator, an integral infrared convergence-type proximity sensor and a manual push-button override into an all-metal, polished chrome plated housing. Sensor range automatically adjusts to its environment at power up and is powered by a 6 VDC power converter. Each power converter can accommodate up to eight flush valves. The valve is complete with high back pressure vacuum breaker, one piece hex coupling nut, adjustable tailpiece, spud coupling and flange for top spud connection. Control stop has internal siphon-guard protection, vandal resistant stop cap, sweat solder kit, and a cast wall flange with set screw. Internal seals are made of chloramine resistant materials.

**NOTE: MUST USE EITHER ZURN P6000-HW6 HARDWIRE POWER CONVERTER OR ZURN P6000-PC6 PLUG-IN POWER CONVERTER TO ENSURE PROPER OPERATION. USING A POWER CONVERTER OTHER THAN ZURN MAY RESULT IN OPERATION MALFUNCTION OR UNIT FAILURE.**

ZURN INDUSTRIES, INC. ♦ COMMERCIAL BRASS OPERATION ♦ 5900 ELWIN BUCHANAN DRIVE ♦ SANFORD NC 27330

Phone: 1-800-997-3876 ♦ Fax: 919-775-3541 ♦ World Wide Web: www.zurn.com

In Canada: ZURN INDUSTRIES LIMITED ♦ 3544 Nashua Drive ♦ Mississauga, Ontario L4V1L2 ♦ Phone: 905-405-8272 Fax: 905-405-1292